



Lexmark™

## MX620 Series

Reliability. Security. Productivity.



MX622adhe with optional trays



This is a Class A device according to the FCC Rules and international electromagnetic emissions standards. This device is not intended for use in residential or domestic environments due to potential interference to radio communications.

# Lexmark MX620 Series

The Lexmark MX620 Series offers printing at up to 47 pages per minute\*, superior print quality, enhanced security and thoughtfully engineered durability, all powered by a quad-core processor to maximise performance. A hard drive (standard on MX622adhe) and optional integrated stapler add capabilities rarely found on desktop devices.



## Get more done

- ▶ Fax\*\*\*\*, print, copy and scan with the power of a 1.2 GHz quad-core processor, 2 GB of standard memory and available hard drive.
- ▶ Get up to 47-page-per-minute printing and scan up to 100 images per minute.
- ▶ Intuitive 17.8 cm e-Task touch screen offers smooth, tablet-like interaction.
- ▶ Built-in productivity apps save time and improve efficiency.
- ▶ Optional integrated stapler adds finishing capabilities.

## Ready when you are

- ▶ Long-life fuser and imaging components extend uptime.
- ▶ Unison™ Toner replacement cartridges deliver up to 25,000 pages\*\* of high-quality printing.
- ▶ Maximum input capacity of 2300 pages means fewer interruptions.
- ▶ Durable metal frame is designed for longevity.

## Robust, built-in security

- ▶ Lexmark's full-spectrum security architecture helps keep your information safe—on the document, the device, over the network, and everywhere in between.
- ▶ A range of embedded features harden device against attacks.
- ▶ Go beyond standard Confidential Print with optional security solutions like Print Release and Lexmark Secure Document Monitor.
- ▶ Keypoint Intelligence - Buyers Lab honoured Lexmark with a prestigious BLI PaceSetter award for Document Imaging Security\*\*\*.



## Built for planet earth

- ▶ Energy management features reduce power consumption in active use or sleep mode.
- ▶ Standard two-sided printing saves paper.
- ▶ Use of post-consumer recycled content in manufacturing saves natural resources.
- ▶ Device is rated EPEAT® Silver and ENERGY STAR® certified.
- ▶ Recycle cartridges through the award-winning Lexmark Cartridge Collection Program (LCCP).

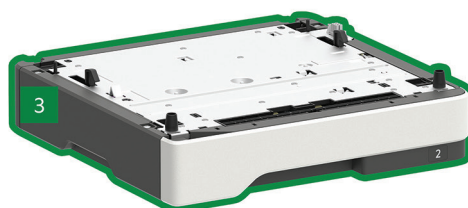
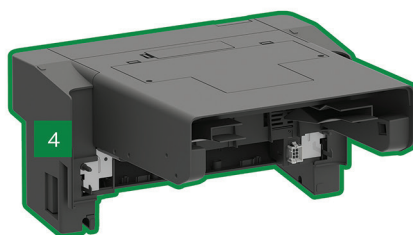
\*Print and copy speeds measured in accordance with ISO/IEC 24734 and ISO/IEC 24735 respectively (ESAT). For more information see: [www.lexmark.com/ISOspeeds](http://www.lexmark.com/ISOspeeds).

\*\*Average standard page yield value declared in accordance with ISO/IEC 19752.

\*\*\*Award based on Western Europe data

\*\*\*\*All models are cloud fax ready. Some models include an analogue fax modem. See [lexmark.com](http://lexmark.com) for details.

# Lexmark MX620 Series



- 1 **MX620 Series with 17.8 cm class touch screen**  
21.5 x 19.3 x 18.8 inches  
545 x 489 x 476.5 mm
- 2 **550-sheet tray**  
5 x 15.7 x 14.7 inches  
126 x 389 x 374 mm

- 3 **250-sheet tray**  
3.7 x 15.7 x 14.7 inches  
95 x 389 x 374 mm
- 4 **Staple finisher**  
7.7 x 16.1 x 14.6\*  
195 x 409 x 371.5  
\*Adds 2.5 inches of depth to MX622de

Standard  
 Optional  
 Supports up to three optional trays.

© 2021 Lexmark. All rights reserved.

Lexmark, the Lexmark logo and Unison are trademarks of Lexmark International, Inc., registered in the United States and/or other countries. AirPrint and the AirPrint Logo are trademarks of Apple, Inc. ENERGY STAR® is a U.S. registered mark. EPEAT® is a trademark of EPEAT, Inc. in the United States and other countries. MOPRIA®, the Mopria® Logo™ and the Mopria® Alliance logos are trademarks, service marks, and certification marks of Mopria Alliance, Inc. in the United States and other countries. All other trademarks are the property of their respective owners.

This product includes software developed by the OpenSSL Project for use in the Open SSL Toolkit (<http://www.openssl.org/>).

Product specifications	Lexmark MX622ade	Lexmark MX622adhe	Lexmark MX622de
<b>Print</b>			
Display	Lexmark e-Task 17.8 cm colour touch screen with audible feedback	Lexmark e-Task 7-inch (17.8 cm) color touch screen	Lexmark e-Task 17.8 cm colour touch screen with audible feedback
Print speed: up to <sup>6</sup>	black: 47 ppm		
Time to first page: as fast as	black: 6 seconds		
Print resolution	black: 1200 IQ (1200 x 600 dpi), 1200 x 1200 dpi, 2400 IQ (2400 x 600 dpi), 600 x 600 dpi		
Memory	standard: 2048 MB / maximum: 2048 MB		
Hard Disk	Option available	Included in configuration	Option available
Recommended monthly page volume <sup>2</sup>	2000 - 20000 pages		
Maximum monthly duty cycle: up to <sup>3</sup>	175000 pages per month		
<b>Copy</b>			
Copy speed: up to <sup>6</sup>	black: 47 cpm		
Time to first copy: as fast as	black: 6 seconds		
<b>Scan</b>			
Scanner type / ADF scan	Flatbed scanner with ADF / DADF (single pass Duplex)		
Duplex scan speed: up to	black: 94 / 100 spm / colour: 60 / 64 spm		
Simplex scan speed: up to	black: 47 / 50 spm / colour: 30 / 32 spm		
ADF paper input capacity: up to	100 pages		
<b>Fax</b>			
Modem speed	ITU T.30, V.34 Half-Duplex, 33.6 kbps		
<b>Supplies<sup>7</sup></b>			
Cartridge yields: up to <sup>1</sup>	6000-page cartridge, 15,000-page High Yield Cartridge, 20,000-page cartridge, 25,000-page Ultra High Yield Cartridge		
Imaging unit yield: up to	60000 pages, based on average 3 pages per print job and 5% coverage		
Cartridge(s) shipped with product <sup>1</sup>	6000-page starter Return Program toner cartridge		
<b>Paper Handling</b>			
Standard paper handling	550-Sheet Input, 100-Sheet Multipurpose Feeder, Integrated Duplex, 250-Sheet Output Bin		
Optional paper handling	250-Sheet Tray, 550-Sheet Tray, 550-Sheet Lockable Tray, Inline Stapler		
Paper input capacity: up to	standard: 650 pages / maximum: 2300 pages		
Paper output capacity: up to	standard: 250 pages / maximum: 250 pages		
Media types supported	Card Stock, Envelopes, Paper Labels, Plain Paper, Transparencies, Refer to the Paper & Specialty Media Guide		
Media sizes supported	10 Envelope, 7 3/4 Envelope, 9 Envelope, A4, A5, DL Envelope, Executive, Folio, JIS-B5, Legal, Letter, Statement, Universal, Oficio, A6		
<b>General<sup>4</sup></b>			
Standard connectivity	One Internal Card Slot, USB 2.0 Specification Hi-Speed Certified (Type B), Gigabit Ethernet (10/100/1000), Front USB 2.0 Specification Hi-Speed Certified port (Type A), Rear USB 2.0 Hi-Speed certified port (type A)		
Optional network ports / Optional local ports	Marknet N8372 WiFi Option / Internal RS-232C serial, Internal 1284-B Bidirectional Parallel		
Noise Level: Operating	Print: 55 dBA / Copy: 56 dBA / Scan: 55 dBA		
Specified operating environment	Humidity: 8 to 80% Relative Humidity, Temperature: 10 to 32°C (50 to 90°F), Altitude: 0 - 5000 Meters		
Product guarantee	1-Year Onsite Service, Next Business Day		
Size / Weight	HxWxD: 545 x 489 x 476.5 mm / 22.3 kg		

All information in this brochure is subject to change without notice. Lexmark is not liable for any errors or omissions.

**This is a Class A device according to the FCC Rules and international electromagnetic emissions standards. This device is not intended for use in residential or domestic environments due to potential interference to radio communications.**

<sup>1</sup>Average standard page yield value declared in accordance with ISO/IEC 19752. <sup>2</sup>"Recommended Monthly Page Volume" is a range of pages that helps customers evaluate Lexmark's product offerings based on the average number of pages customers plan to print on the device each month. Lexmark recommends that the number of pages per month be within the stated range for optimum device performance, based on factors including: supplies replacement intervals, paper loading intervals, speed, and typical customer usage. <sup>3</sup>"Maximum Monthly Duty Cycle" is defined as the maximum number of pages a device could deliver in a month using a multishift operation. This metric provides a comparison of robustness in relation to other Lexmark printers and MFPs. <sup>4</sup>Printers are sold subject to certain license/agreement conditions. See [www.lexmark.com/printerlicense](http://www.lexmark.com/printerlicense) for details. <sup>5</sup>Actual Yield may vary based on other factors such as device speed, paper size and feed orientation, toner coverage, tray source, percentage of black-only printing and average print job complexity. <sup>6</sup>Print and copy speeds measured in accordance with ISO/IEC 24734 and ISO/IEC 24735 respectively (ESAT). For more information see: [www.lexmark.com/ISOspeeds](http://www.lexmark.com/ISOspeeds). <sup>7</sup>Product functions only with replacement cartridges designed for use in a specific geographical region. See [www.lexmark.com/regions](http://www.lexmark.com/regions) for more details.